



mushaboom
design™



The Garden of Good and Evil Collection

The Tree of Life is a symbol that appears in nearly every ancient culture. With its branches reaching into the sky, and its roots deep in the earth, it dwells in three worlds – heaven, earth and underworld – and acts as a link among the three.'

– Canadian Tapestry, Textile Museum of Canada.

Arbor Vitae is a the mural scale Tree of Life design that anchors the collection and is complimented by seven coordinating patterns in four colourways from traditional to trend-setting.



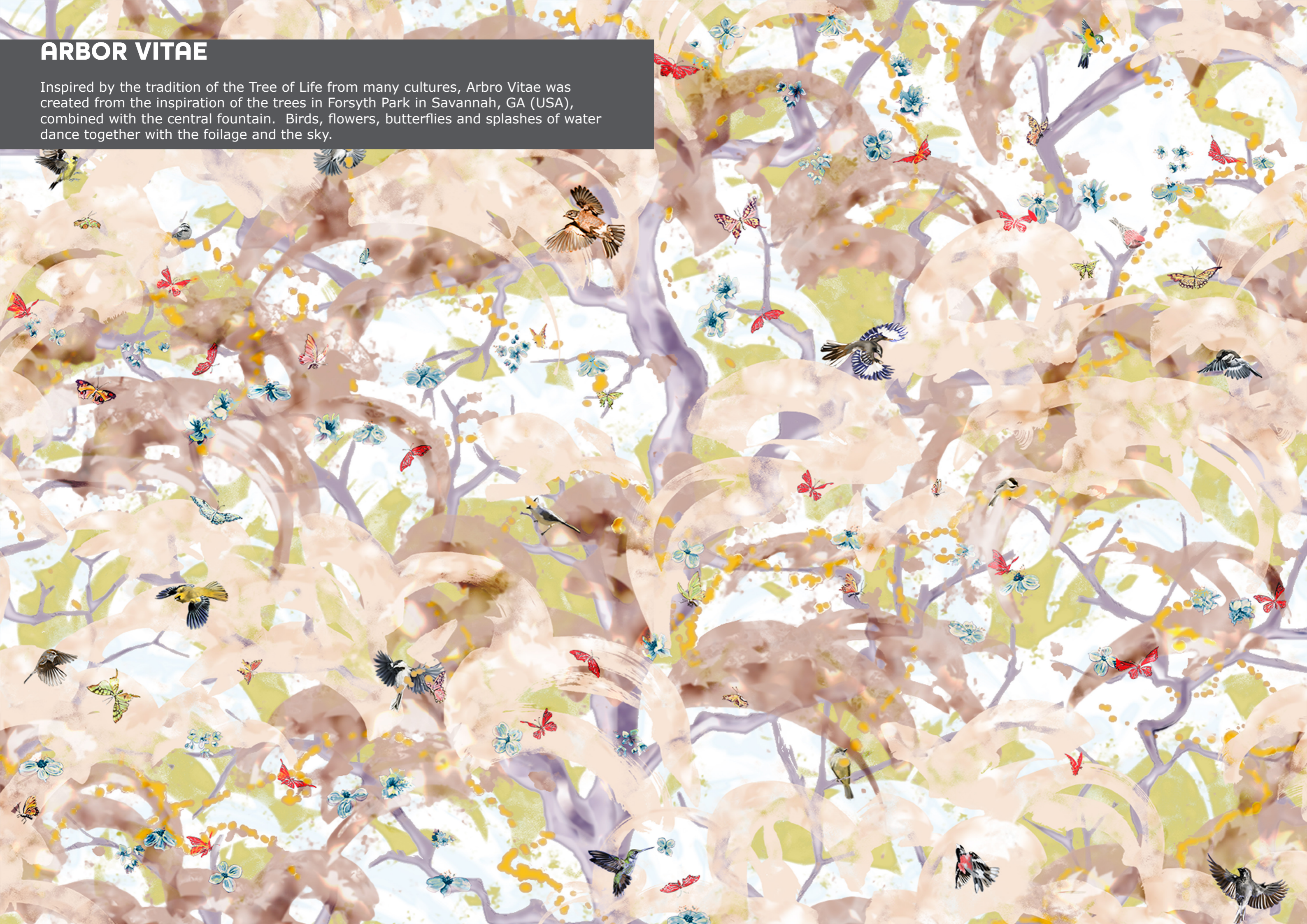
The Garden of Good and Evil collection

Seven patterns inspired by nature to bring beauty and luxury into your space. Available as upholstery fabric or wallcovering in four colour stories from traditional to trend-setting.

Clockwise from top left: Arbor Vitae, Spalliera, Silvis, Flores, Terra, Herba, Avia, and Pluvia.

ARBOR VITAE

Inspired by the tradition of the Tree of Life from many cultures, Arbro Vitae was created from the inspiration of the trees in Forsyth Park in Savannah, GA (USA), combined with the central fountain. Birds, flowers, butterflies and splashes of water dance together with the foliage and the sky.





Full scale detail.



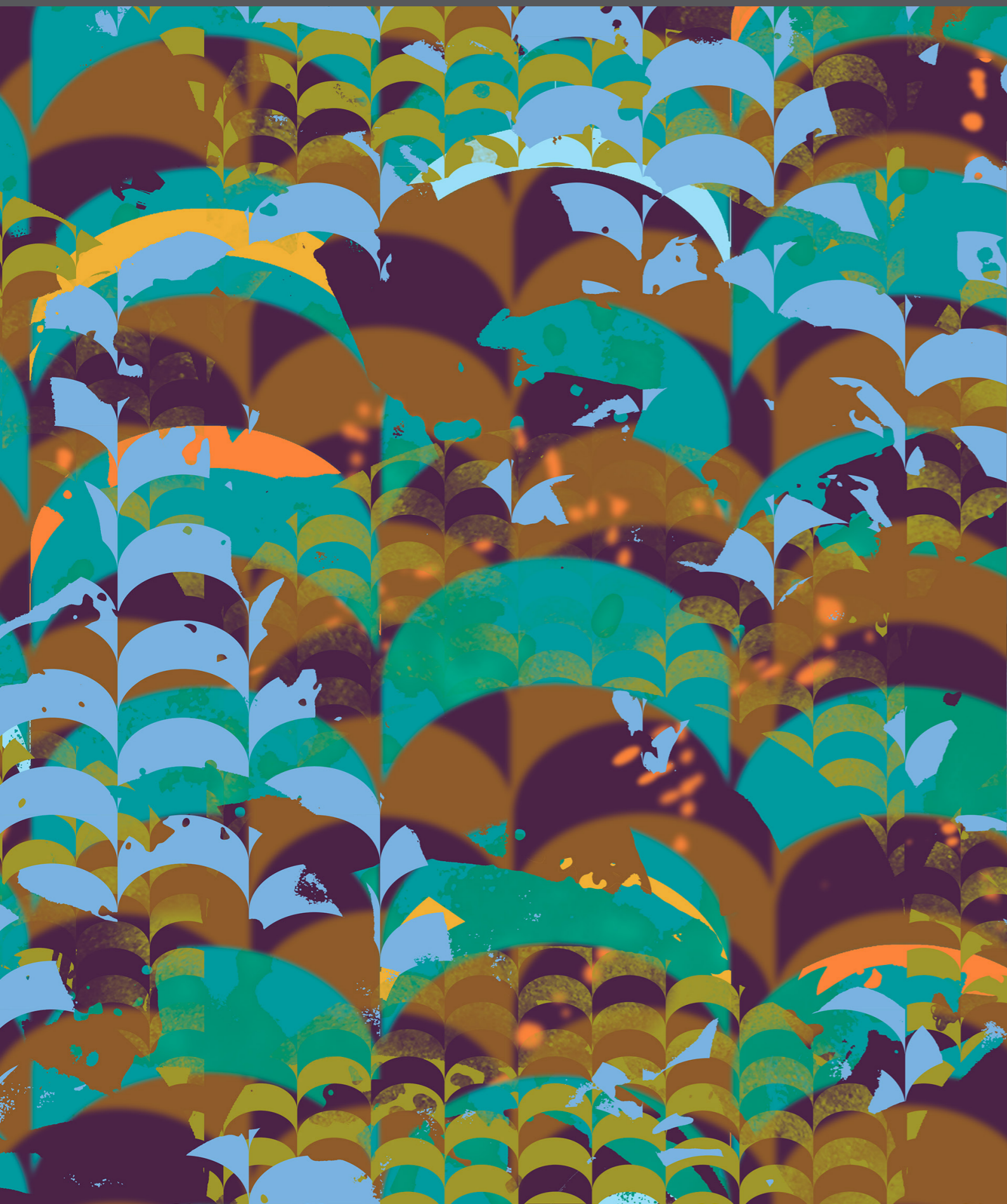
SPALLIERA

The formality of the rose garden in Forsyth park meets the wildness of the magnolia blossoms in this floral stripe.



PLUVIA

Savannah is known for its sudden rainstorms which inspired this pattern combining the idea of the pattern of sound of the falling rain to the image of clouds and rain seen through the many branches of the trees in the park.



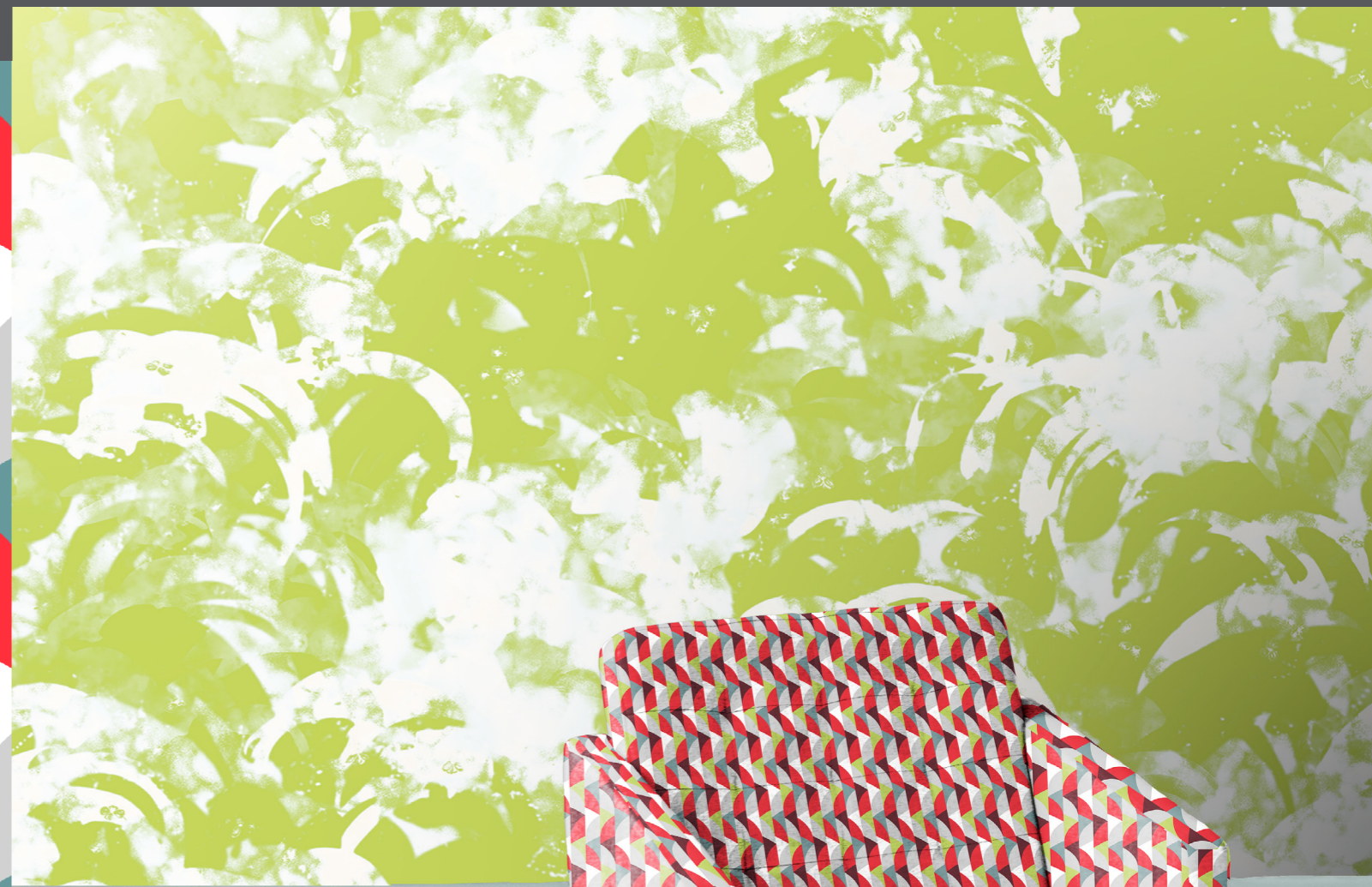
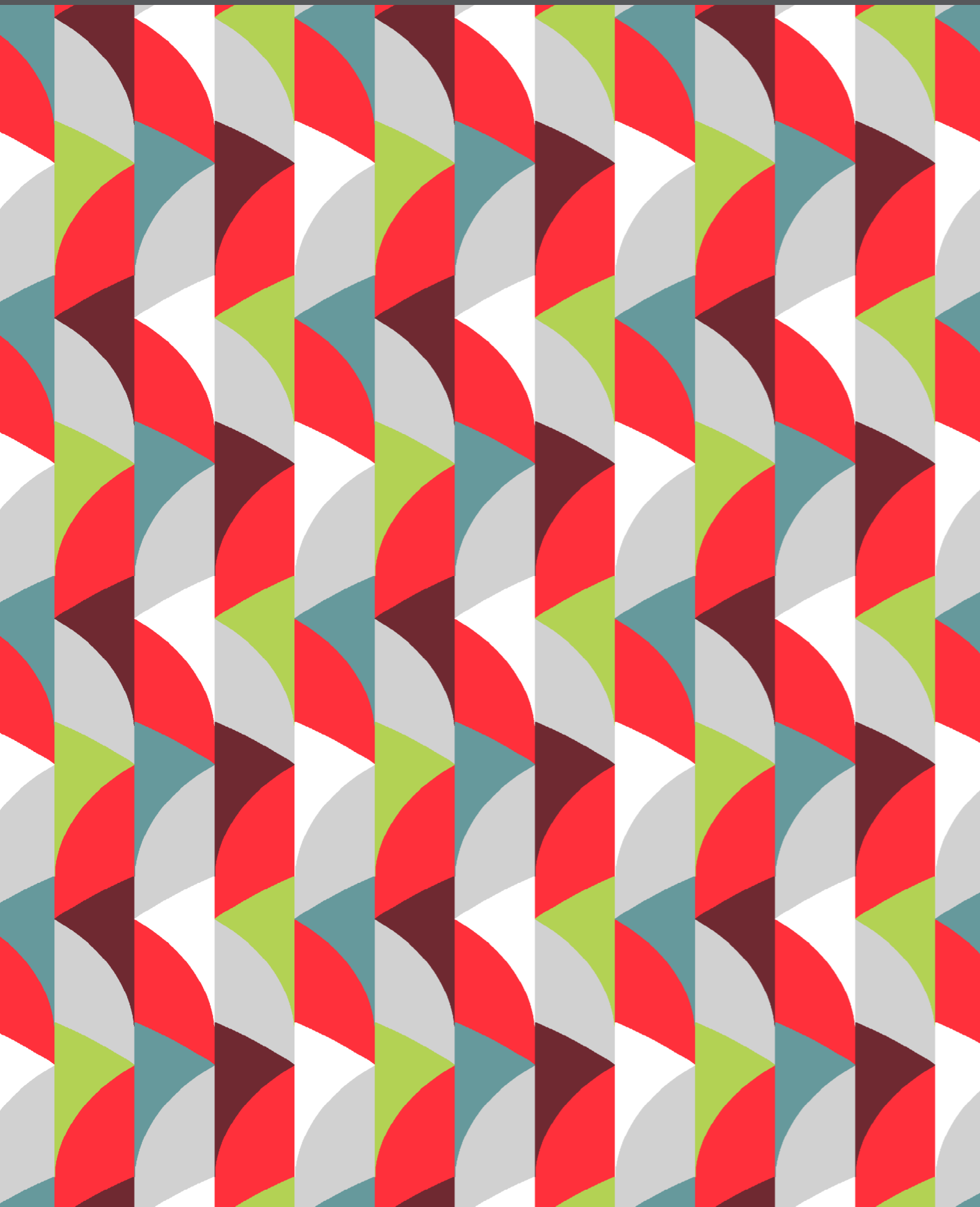
AVIA

Birds, flowers, and butterflies play across a field of abstract shapes which are a hybrid of clouds and leaves.



TERRA

Paving in the park, jazz, the movement of people in the park come together in this dynamic geometric.



HERBA

A dynamic stripe that serves as a contrast to the organic forms and provides an element of clash in the collection.



SILVIS

The abstraction and coming together of the clouds in the sky and the leaves in the branches from the basis of this textured pattern.



FLORES

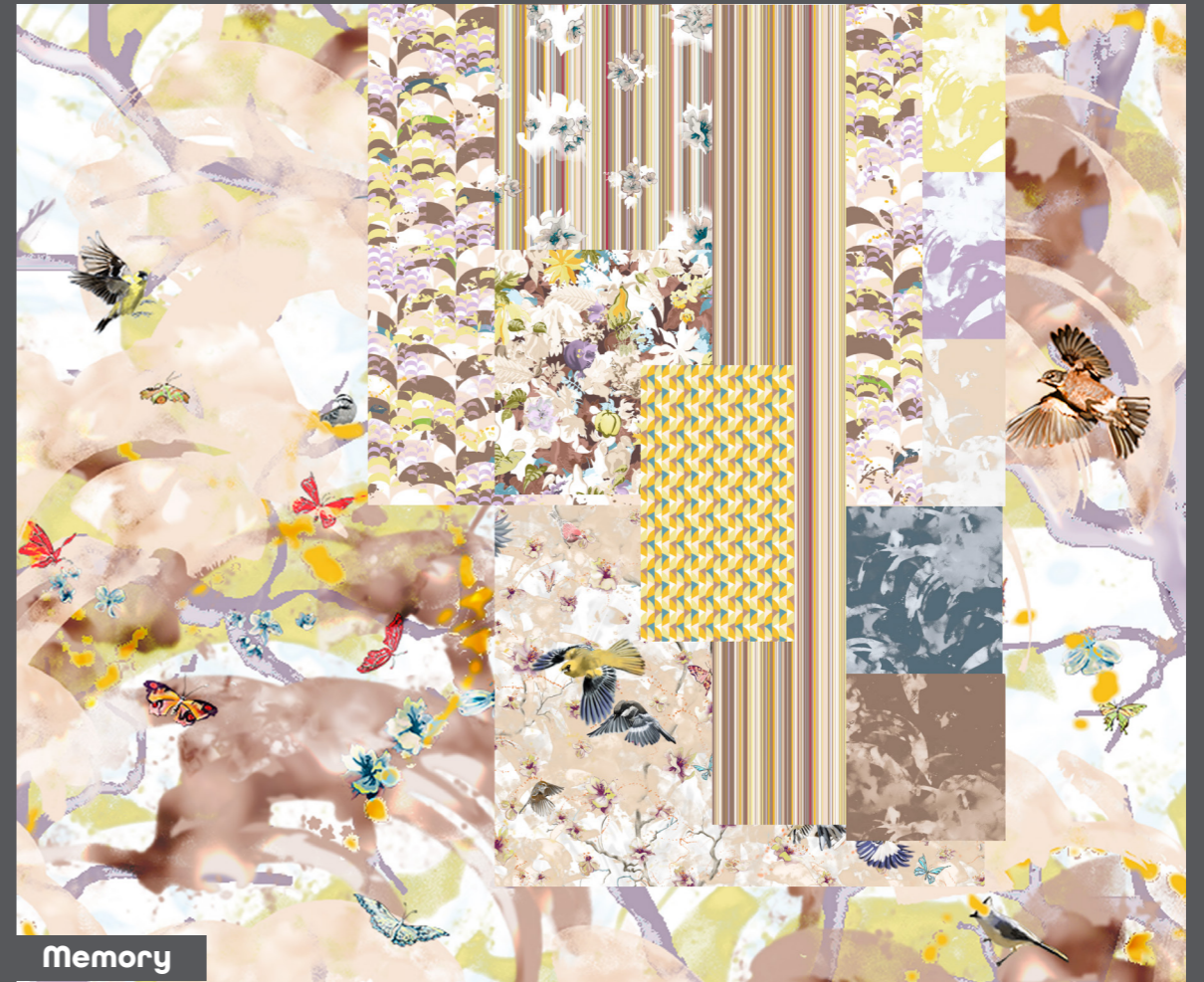
The flowers and fruit from the plantings of the park and the fantastic farmers market mix freely with leaves and branches from the park in this all over, slightly retro, design.



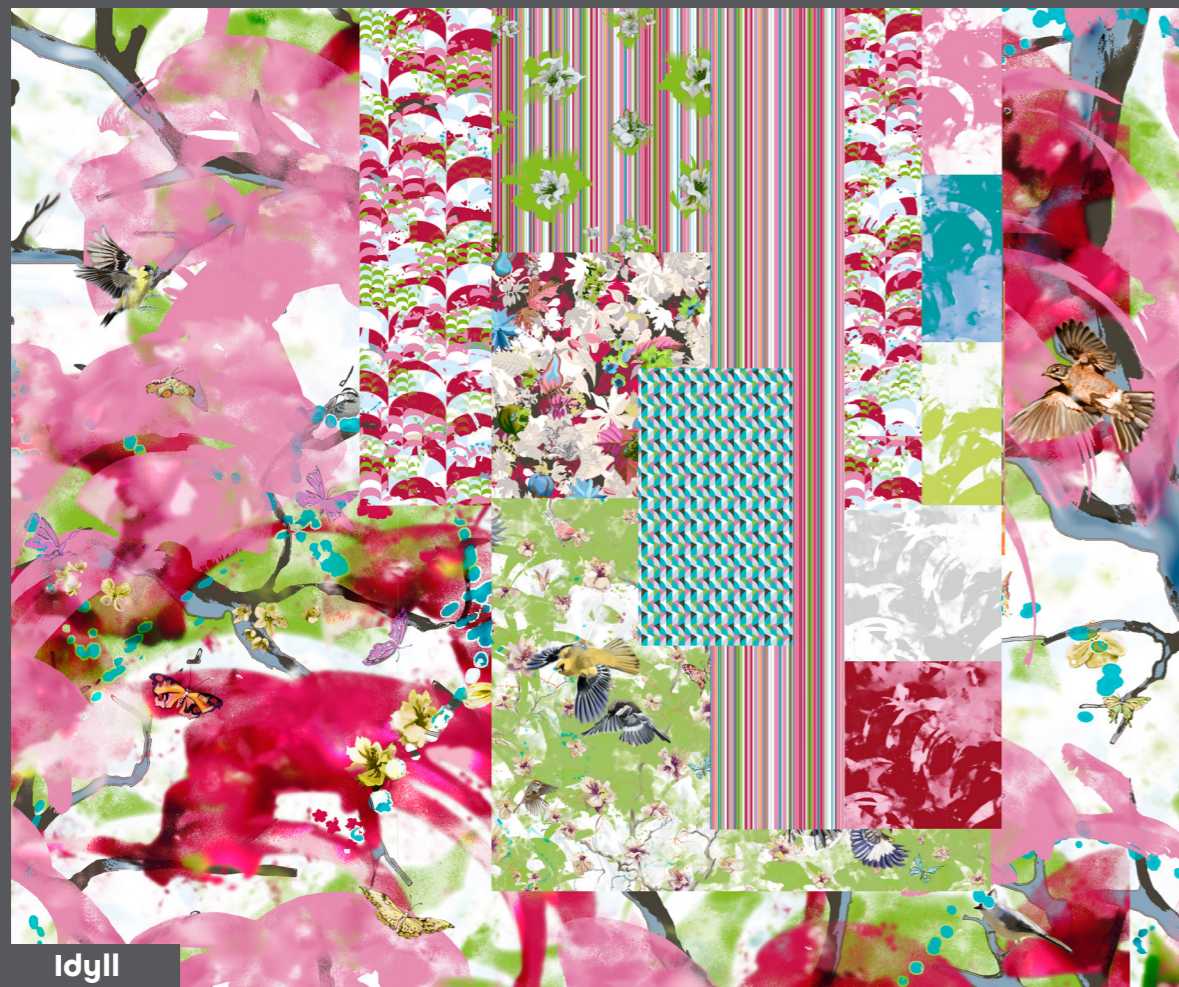
The four standard colour stories of the Garden of Good and Evil collection.



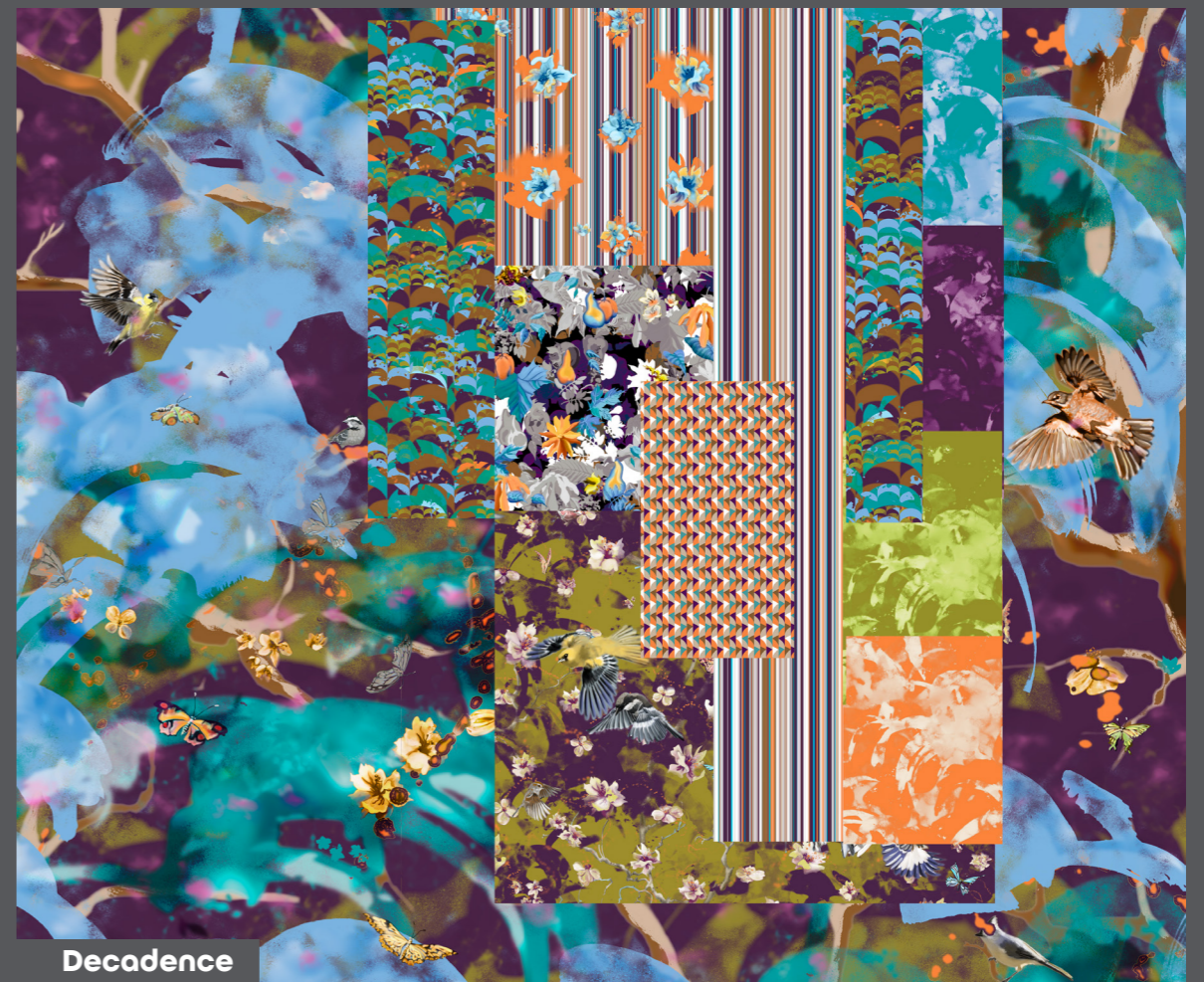
Bliss



Memory



Idyll



Decadence

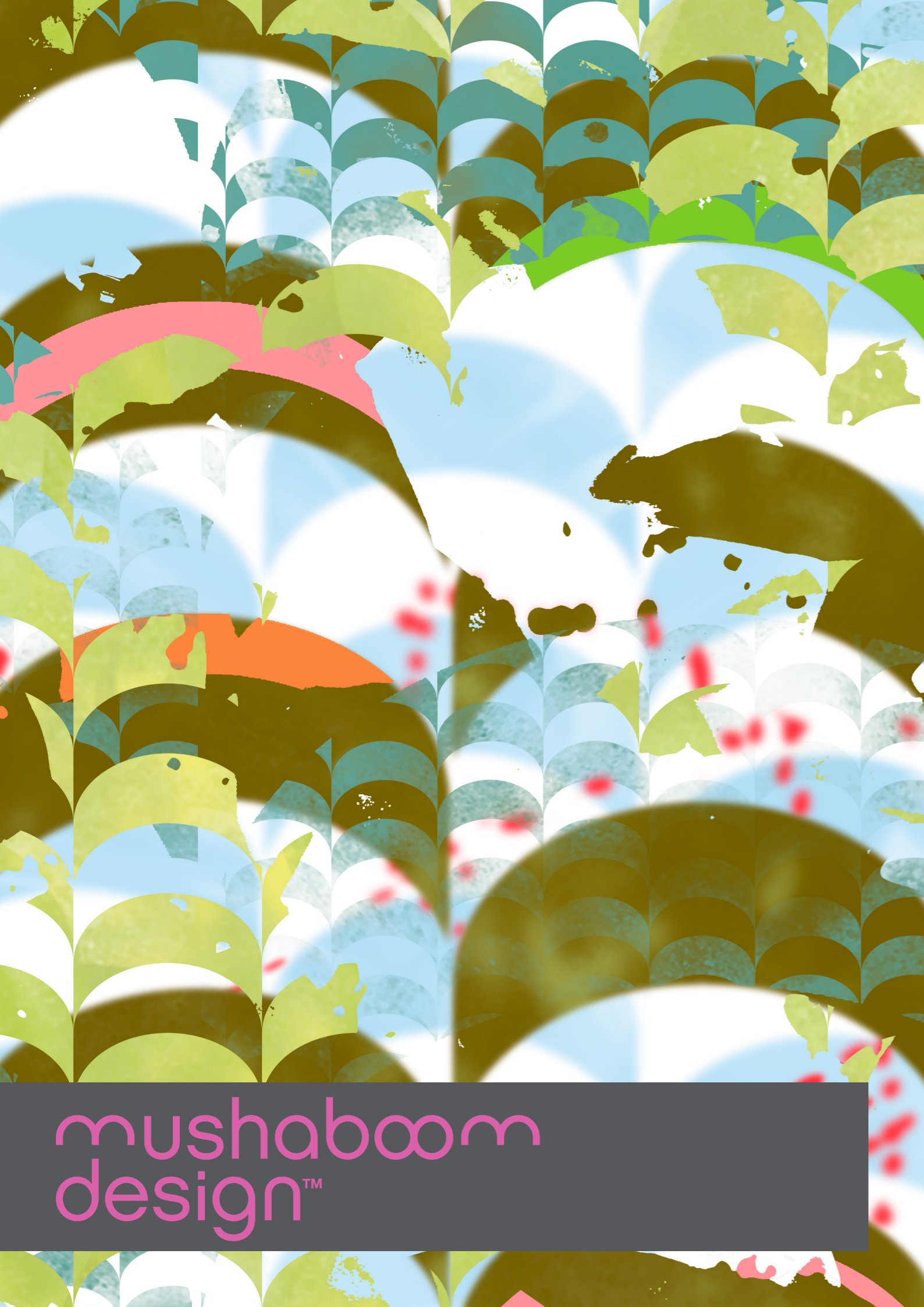


Sketches









mushaboom
design™