

mushaboom
design™





The MULTILOCAL Collection

A deconstructed view of the cities where I travel and where I am at home. Transformed through memory and process into poetic representations of multilocalism; the patterns in this collection become universal images of the urban experience.

– Barry Roode

Seven patterns expressing this vision are digitally printed on a luxurious linen-cotton fabric suitable for use as upholstery, drapery and wall applications.



The MULTILOCAL collection

City maps, blurred photos in the subway, reflections, city lights, the sounds and sights of the city, the polyglot mix of my brain merge and dance in this group of six designs available in six colourstories for upholstery or wallcovering.

Clockwise from top left: Cosmopolitan, Metro, Polster, Signal, Plaza, and Reflection.

Printed on 100% Cotton, 290 grams sq/meter, made in Italy.





COSMOPOLITAN

Maps, memories, architectural details, construction, and photos from above are combined to create this large scale design bringing together elements of many cities.



REFLECTION

Windows reflecting on the surface of other windows, photographed, and further layered created this beautiful all-over design.



METRO

Photographs taken while the subway was in motion was the starting point for this layered multi-coloured stripe.





PLAZA

A unique building in Brussels was the source of this design combined with the dance of people in a busy city.



POSTER

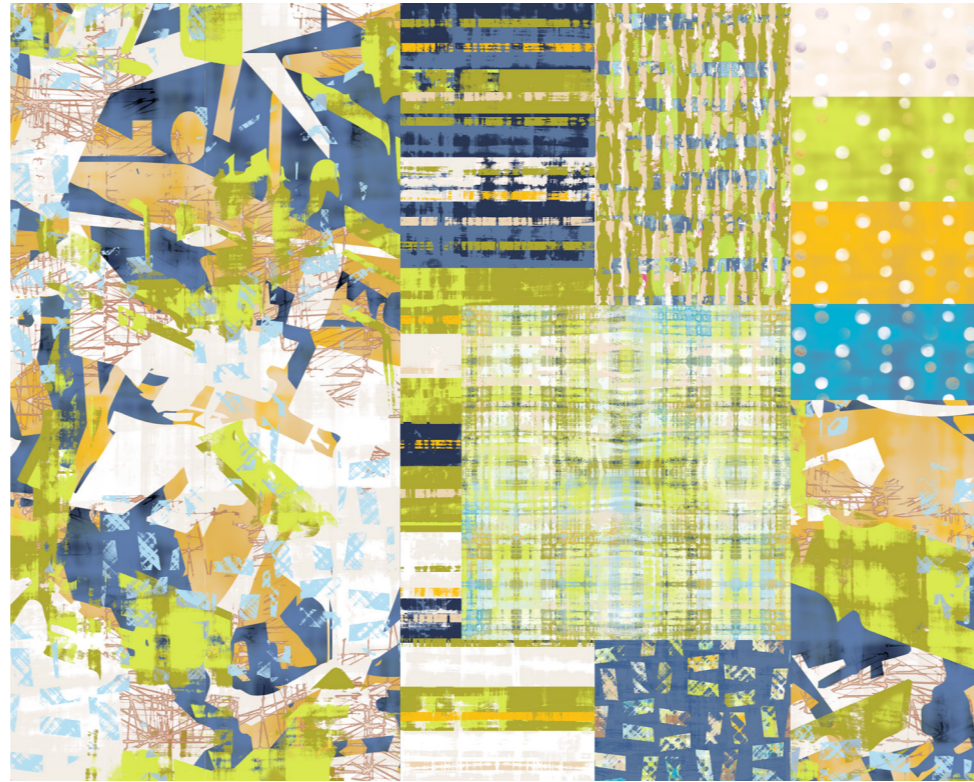
Inspired by posters in the subway and along the sidewalks this innovative design has a dynamic layout and rich layered effect.



SIGNAL

An elegant pattern with subtle shadings providing depth and interest.





Colours

Five colourstories from natural to punchy accents suitable for a range of furniture styles or spaces are available.

Sketches

Photographs, collage, map details, painting and drawing come together to create the artwork in this vibrant contemporary collection.









mushaboom
design™